

£675,000

Alexandra Road

Hounslow, TW3 4HR



PROPERTY SUMMARY

Located on a very popular road in Hounslow. Alexandra Road is well known for its 1930's spacious semi-detached properties. This home offers a perfect opportunity to make it your own with potential to further extend. Spanning an impressive 1,460 square feet, the property boasts two spacious reception rooms, large kitchen/diner, first floor bathroom and three well-proportioned bedrooms, perfect for families seeking extra space.

The location is particularly advantageous, as it is just a short walk from Hounslow Central Tube Station, offering excellent transport links to central London. This accessibility makes it an ideal choice for commuters.

The property presents exciting opportunities for extension, allowing you to tailor the space to your specific needs and preferences. Whether you envision a larger living area or additional bedrooms, the scope to enhance this home is great. Available with no onward chain.

3



1



2





Approximate Gross Internal Area = 122.75 sq m / 1322 sq ft
Garage = 12.85 sq m / 138 sq ft
Total = 135.60 sq m / 1460 sq ft
(Excluding Store)



LOCAL AUTHORITY

Hounslow

TENURE

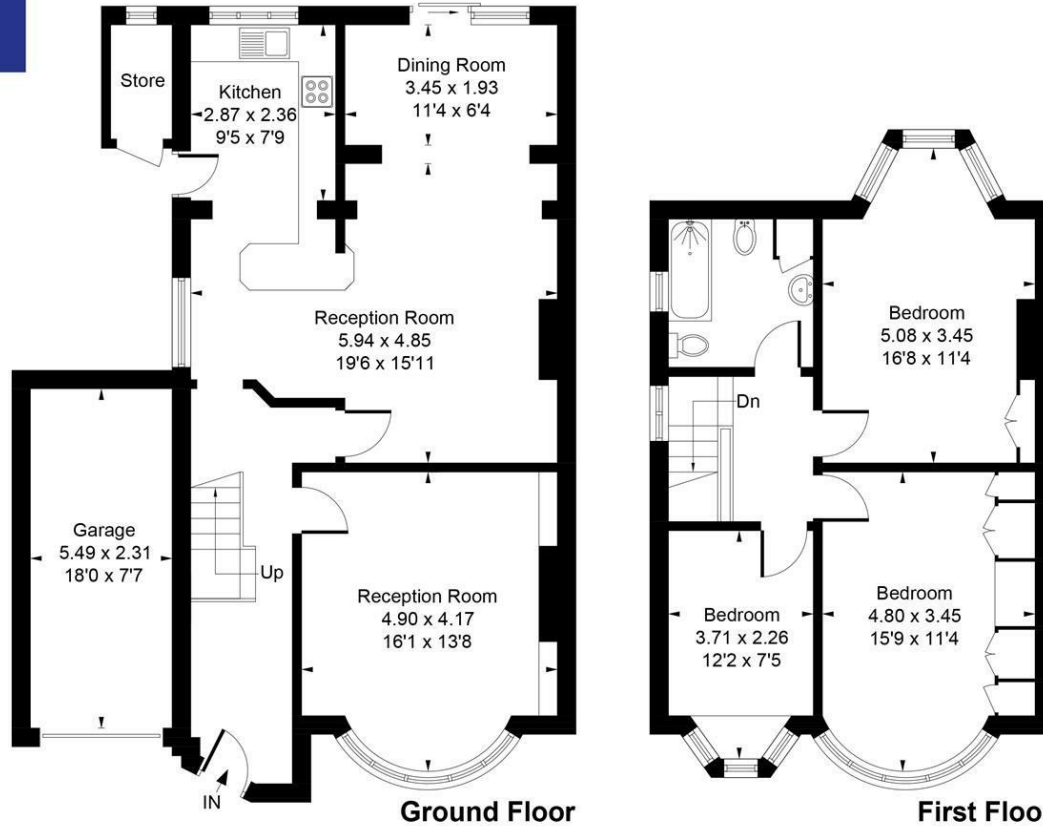
Freehold

COUNCIL TAX BAND

VIEWINGS

By prior appointment only

Energy Efficiency Rating		
	Current	Potential
Very energy efficient - lower running costs		
(92 plus) A		
(81-91) B		
(69-80) C		80
(55-68) D	57	
(39-54) E		
(21-38) F		
(1-20) G		
Not energy efficient - higher running costs		
England & Wales EU Directive 2002/91/EC		



Whilst every attempt has been made to ensure the accuracy of the floor plan contained here, measurements of doors, windows, rooms and any other items are approximate and no responsibility is taken for any error, omission, or mis-statement. This plan is for illustrative purposes only and should be used as such by any prospective purchase.

© Vizion Property Marketing Produced for Shaw & Co.



Agents Note: Whilst every care has been taken to prepare these particulars, they are for guidance purposes only. All measurements are approximate and are for general guidance purposes only and whilst every care has been taken to ensure their accuracy, they should not be relied upon and potential buyers/tenants are advised to recheck the measurements